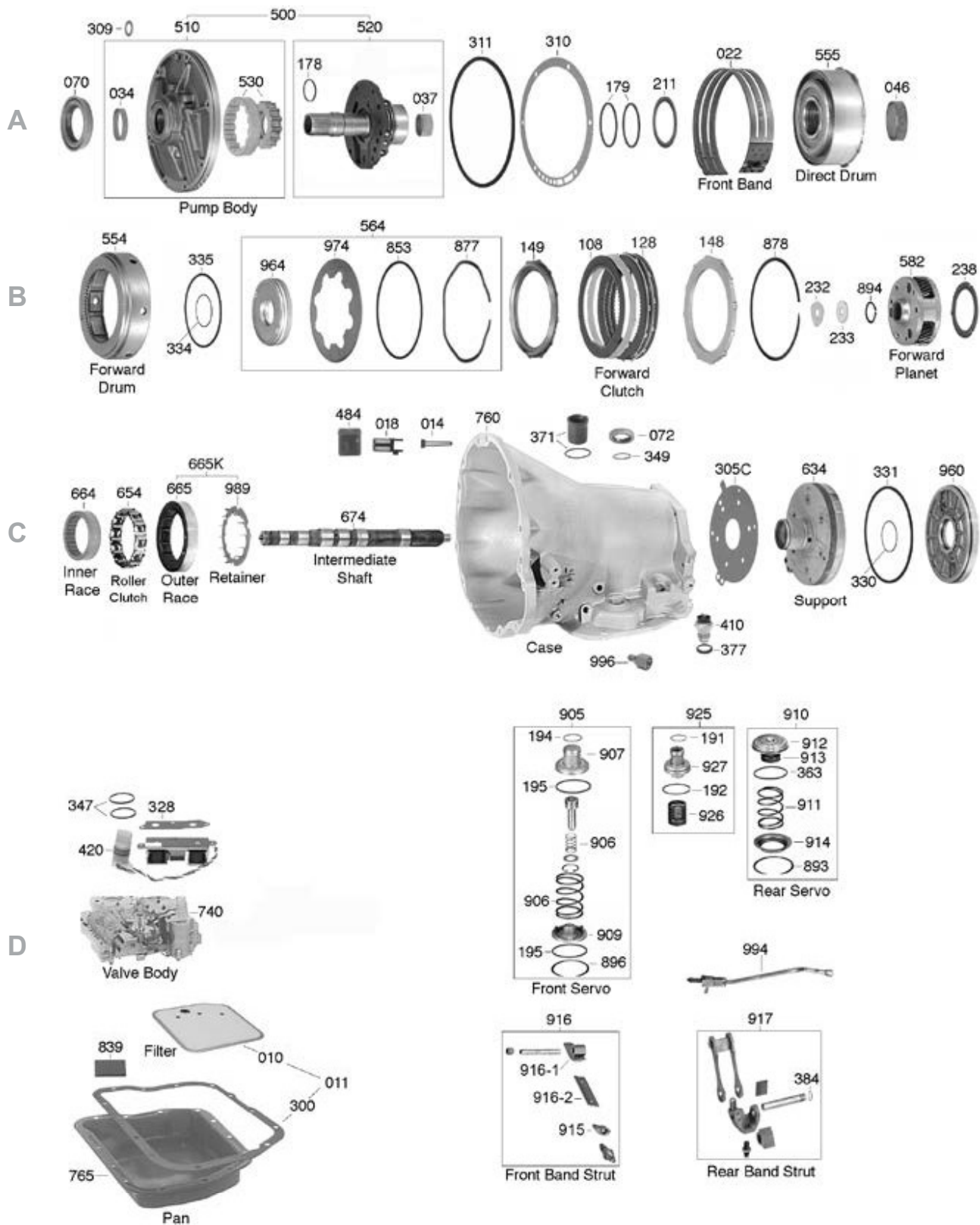
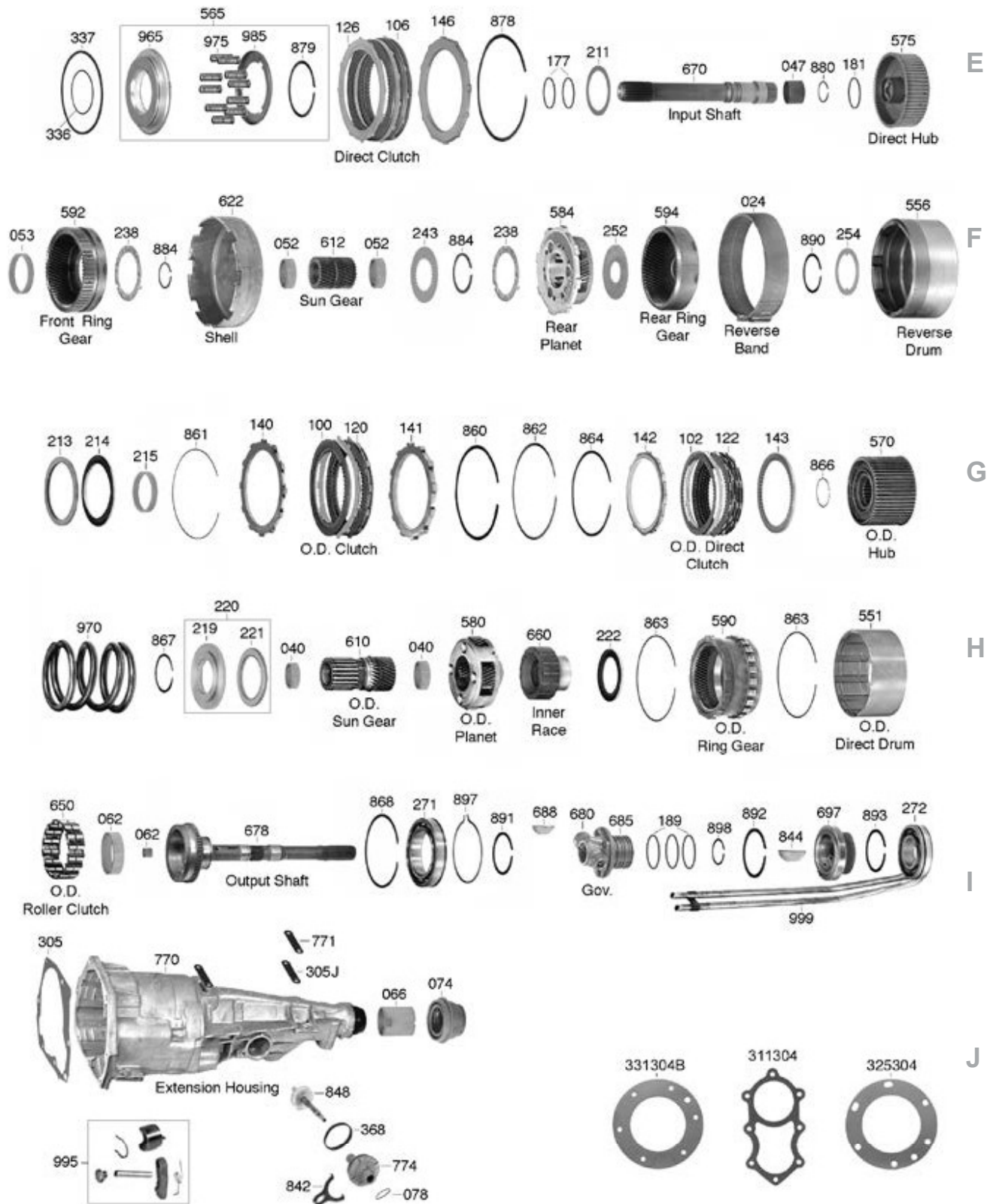


## A518, A618, 46RE/RH, 47RE/RH, 48RE



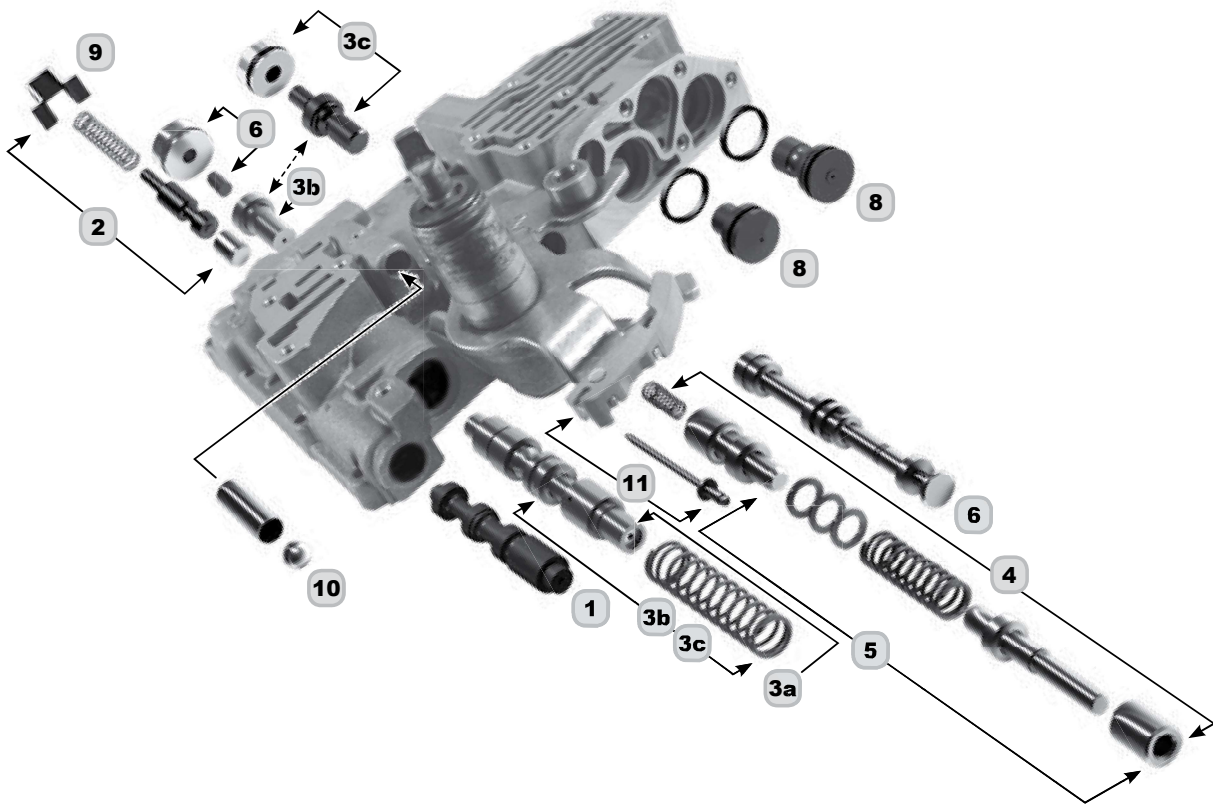
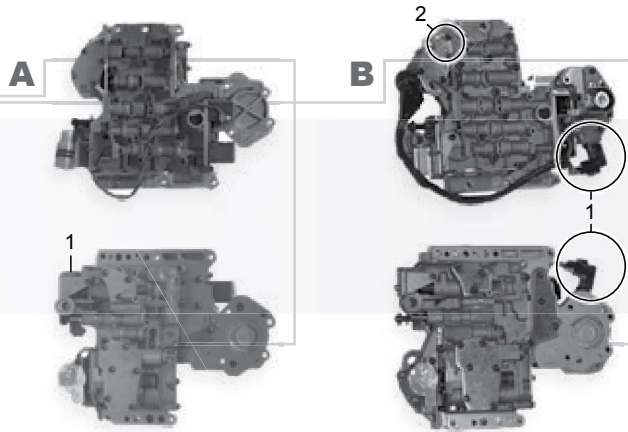
## A518, A618, 46RE/RH, 47RE/RH, 48RE



## A518, A618, 46RE/RH, 47RE/RH, 48RE

### VALVE BODY GUIDE

Part	Year	Trans.	
<b>A</b> P22740-3	90-Up	A518	w/non lockup
P22740-5	90-99	A518	w/lockup, w/boost tube (1)
<b>B</b> P22740-6	95-99	46/47RE	w/small port (1), round metal sensor (2)
P22740-7	95-99	46/47RE	w/large port (1), round metal sensor (2)
P22740-1	99-Up	46/47RE	w/small port (1), square plastic sensor (2)
P22740-2	99-Up	46/17RE	w/large port (1), square plastic sensor (2)
P22740-12	03-07	48RE	w/small port, square plastic sensor (1), no exhaust passage (2)



## A518, A618, 46RE/RH, 47RE/RH, 48RE



22300



12010C



12010J

ILL.		QTY.	YEAR	PART No.	REF. No.
<b>DELUXE KITS (SUPER KITS)</b>					
008	A518 (46RH, 46RE) (Cork) .....	1	90-97	22008E	N.L.
008	A518 (46RH, 46RE) (Fiber) .....	1	90-97	22008EF	N.L.
008	A518 (46RH, 46RE) (Cork) .....	1	98-03	22008G	N.L.
008	A518 (46RH, 46RE) (Fiber) .....	1	98-03	22008GF	N.L.
008	A618 (47RH, 47RE) (Cork) .....	1	94-97	22008EA	N.L.
008	A618 (47RH, 47RE) (Fiber) .....	1	94-97	22008EAF	N.L.
008	A618 (47RH, 47RE) (Cork) .....	1	98-02	22008GA	N.L.
008	A618 (47RH, 47RE) (Fiber) .....	1	98-02	22008GAF	N.L.
008	48RE (Bonded Pan Gasket) .....	1	03-Up	22008HW	N.L.
<b>COMPLIANCE KITS (CALIFORNIA KITS)</b>					
007	A518 (46RH, 46RE), A618 (47RH, 47RE) (Cork) .....	1	90-97	22007E	N.L.
007	A518 (46RH, 46RE), A618 (47RH, 47RE) (Fiber) .....	1	90-97	22007EF	N.L.
007	A518 (46RH, 46RE), A618 (47RH, 47RE) (Cork) .....	1	98-03	22007G	N.L.
007	A518 (46RH, 46RE), A618 (47RH, 47RE) (Fiber) .....	1	98-03	22007GF	N.L.
007	48RE (Bonded Pan Gasket) .....	1	03-Up	22007HW	N.L.
<b>MASTER OVERHAUL KITS (WITH STEELS)</b>					
006	A518 (46RH, 46RE) (Cork) .....	1	90-97	22006E	N.L.
006	A518 (46RH, 46RE) (Fiber) .....	1	90-97	22006EF	N.L.
006	A518 (46RH, 46RE) (Cork) .....	1	98-03	22006G	N.L.
006	A518 (46RH, 46RE) (Fiber) .....	1	98-03	22006GF	N.L.
006	A618 (47RH, 47RE) (Cork) .....	1	94-97	22006EA	N.L.
006	A618 (47RH, 47RE) (Fiber) .....	1	94-97	22006EAF	N.L.
006	A618 (47RH, 47RE) (Cork) .....	1	98-02	22006GA	N.L.
006	A618 (47RH, 47RE) (Fiber) .....	1	98-02	22006GAF	N.L.
006	48RE (Bonded Pan Gasket) .....	1	03-Up	22006HW	N.L.
006	48RE (Red HP Frictions, Kolene Steels) (Bonded Pan Gasket) .....	1	03-Up	A22006HWHP	N.L.
<b>LESS STEEL KITS</b>					
004	A518 (46RH, 46RE), A618 (47RH, 47RE) (Cork) .....	1	90-97	22004E	N.L.
004	A518 (46RH, 46RE), A618 (47RH, 47RE) (Fiber) .....	1	90-97	22004EF	N.L.
004	A518 (46RH, 46RE), A618 (47RH, 47RE) (Cork) .....	1	98-03	22004G	N.L.
004	A518 (46RH, 46RE), A618 (47RH, 47RE) (Fiber) .....	1	98-03	22004GF	N.L.
004	48RE (Bonded Pan Gasket) .....	1	03-Up	22004HW	N.L.
004	48RE (Fiber) (Value Line) .....	1	03-Up	A22004HF	N.L.
<b>OVERHAUL KITS (W/ RINGS &amp; SEALS)</b>					
002	A518 (46RH, 46RE), A618 (47RH, 47RE) (Cork) .....	1	90-03	22002E	N.L.
002	A518 (46RH, 46RE), A618 (47RH, 47RE) (Fiber) .....	1	90-03	22002EF	N.L.
002	48RE .....	1	03-Up	22002HW	N.L.
<b>FILTER KITS</b>					
011	Filter Kit, Dacron (Cork) .....	1	90-97	12011G	N.L.
011	Filter Kit, Dacron (Fiber) .....	1	90-97	12011GF	N.L.
011	Filter Kit, Plastic & Metal (Cork) .....	1	98-Up	12011J	N.L.
011	Filter Kit, Plastic & Metal (Fiber) .....	1	98-Up	12011JF	N.L.
<b>FILTERS</b>					
010D	Large Dacron .....	1	90-97	12010C	3515996
010D	Large Brass .....	1	90-97	12010D	3515996
010D	Plastic & Metal .....	1	98-Up	12010J	52118789
014C	Screen, Governor .....	1	90-Up	12014	3743519



## A518, A618, 46RE/RH, 47RE/RH, 48RE

ILL.		QTY.	YEAR	PART No.	REF. No.
<b>FILTERS (Cont.)</b>					
018C	Screen, Valve Body Feed .....	1	90-Up	12018	3878313
484C	Screen & Orifice, Overdrive .....	1	90-Up	12484	4412583
<b>BANDS</b>					
022A	Kickdown Flex .....	1	90-Up	22022A	3681105
022A	Kickdown Flex (Kevlar) .....	1	90-Up	22022AK	3681105
022A	Kickdown Flex (High Performance) .....	1	90-Up	22022C	N.L.
022A	Kickdown Rigid .....	1	90-Up	22022B	2124342
022A	Kickdown Split Band Wide (Heavy Duty) .....	1	90-Up	22022H	2124342
024F	Reverse (6" Drum) Solid (A518, 46RH, 46RE) .....	1	90-E91	22024A	4505091
024F	Reverse (6.250" Drum) Solid (A518, 46RH, 46RE) .....	1	L91-Up	22024B	4471476AB
024F	Reverse (6.250" Drum) Double Wrap (A618, 47RH, 47RE, 48RE) .....	1	94-Up	22024C	4531231
<b>BUSHINGS</b>					
030	Bushing Kit (w/o OD Bushings) .....	1	90-93	22030B	N.L.
030	Bushing Kit (w/ OD Bushings) .....	1	90-93	22030EB	N.L.
030	Bushing Kit (w/o OD Bushings) (may not incl 48RE Ext Hsg Bushing 22066) .....	1	94-Up	22030BA	N.L.
030	Bushing Kit (w/ OD Bushings) (may not incl 48RE Ext Hsg Bushing 22066) .....	1	94-Up	22030EC	N.L.
030	Bushing Kit (OD Bushings Only) .....	1	90-Up	12030E	N.L.
034A	Pump (Babbitt) .....	1	90-Up	22034	2466324
034A	Pump (Bronze) .....	1	90-Up	22034A	2466324
034A	Pump (w/ Ball Indented Oil Packets) .....	1	90-Up	22034B	4531163
037A	Stator (Rear) (1.125" ID) .....	1	90-95	22037B	2801348
037A	Stator (Rear) (1.250" ID) .....	1	96-Up	22037C	4617416
040H	Overdrive Sun Gear (Front) .....	1	90-93	12040	4461025
040H	Overdrive Sun Gear (Front) w/ Flange .....	1	94-E99	12040A	N.L.
040H	Overdrive Sun Gear (Front) .....	1	99-Up	12040B	5015107AA
040H	Overdrive Sun Gear (Rear) Gear Side .....	1	90-Up	12040	4461025
046A	Direct Drum (w/ Oil Groove) .....	1	90-Up	22046C	4058647
052F	Sun Gear (.500" Wide) (Front & Rear) .....	1	90-Up	22052	1736520
052F	Sun Gear (.750" Wide) (Rear) .....	1	90-Up	22052A	2464381
053	Front Planet (used w/ Steel Planets (Plastic) (.370" Wide) .....	1	96-Up	22053E	4617951
053	Front Planet (used w/ Steel Planets (Plastic) (.300" Wide) .....	1	03-Up	22053EA	52854038AA
062I	Output Shaft Large (2.144" ID) .....	1	90-Up	12062	4461006
062I	Output Shaft Small Pilot (.605" ID) .....	1	90-Up	12062B	4461007
066J	Extension Housing (exc 48RE) .....	1	90-Up	36066	B5AZ-7A034A
066J	Extension Housing (48RE) .....	1	03-Up	22066	N.L.
069	Case Shift Lever Bore (req T-56361-TL) .....	1	90-Up	22069	22179-02
<b>METAL CLAD SEALS</b>					
070A	Front Pump .....	1	90-Up	22070	4531225
072C	Manual Shaft (.250" Thick) .....	1	90-Up	22072	4505098
072C	Manual Shaft (.375" Thick) .....	1	90-Up	22072A	4505098
072C	Manual Shaft Seal Saver .....	1	90-Up	22072SS	N.L.
074J	Rear (w/o Boot) .....	1	90-Up	36074	D5AZ-7052A
074J	Rear (w/ Boot) .....	1	90-Up	36074B	C1DP-7052A
074J	Rear w/ Bolt on Yoke (48RE) .....	1	03-Up	22074B	52854126AA
074J	Transfer Case Adapter (4wd) .....	1	90-Up	12074J	4269956AB
<b>FRICTION PLATES</b>					
100G	Overdrive Brake (6.077" OD) (Flat) .....	4-6	90-Up	12100	4461162
100G	Overdrive Brake (6.077" OD) (Waved) (Hi-Energy) .....	4-6	90-Up	12100B	4461162
100G	Overdrive Brake (6.077" OD) (Waved) Raybestos GPZ Lining .....	4-6	90-Up	12100C	4461162
100G	Overdrive Brake (High Performance) (Red) .....	4-6	90-Up	A12100HP	N.L.
100G	Power Pack, Overdrive Brake .....	1	90-Up	A12100CHPK	N.L.
102G	Overdrive Direct (5.488" OD) .....	6-10	90-Up	12102	4461042
106E	Direct (.095") .....	2-4	90-97	22106	2801167
106E	Direct (.085") (Hi-Energy) (98-Up) .....	3-5	98-Up	22106B	4617201AC
106E	Direct (.095") (Hi-Energy) (90-97) .....	2-4	90-97	22106A	4617202
106E	Direct (.061") (High Performance) (Red) .....	2-4	90-97	A22108HP	N.L.
106E	Direct (.064") (High Performance) (Blue) .....	2-4	90-97	R22108HP	N.L.
106E	Direct (.095") (High Performance) (Red) (90-97) .....	2-4	90-97	A22106HP	N.L.
106E	Direct (.085") (High Performance) (Red) (98-Up) .....	3-5	98-Up	A22106BHP	N.L.
108B	Forward (62T) (exc 48RE) (Tan Replaces Early Green) .....	4	90-Up	22108	2801992
108B	Forward (62T) (exc 48RE) (Hi-Energy) .....	4	98-Up	22108A	2801992AB
108B	Forward (62T) (exc 48RE) (High Performance) (Blue) .....	4	90-Up	R22108HP	N.L.
108B	Forward (62T) (exc 48RE) (High Performance) (Red) .....	4	90-Up	A22108HP	N.L.

## A518, A618, 46RE/RH, 47RE/RH, 48RE

ILL.		QTY.	YEAR	PART No.	REF. No.
<b>FRICITION PLATES (Cont.)</b>					
108B	Forward (92T) (48RE) (Hi-Energy) .....	4	03-Up	22108B	52854030AA
108B	Forward (92T) (48RE) (High Performance) (Red) .....	4	03-Up	A22108BHP	N.L.
119	Friction Module (518, 618) .....	1	98-03	22119G	N.L.
119	Friction Module (48RE) .....	1	03-Up	22119H	N.L.
N.I.	Power Pack, Direct (High Performance) .....	1	03-Up	A22106HPK	N.L.
N.I.	Power Pack, Forward (Exc. 48RE) (High Performance) .....	1	03-Up	A22108BHPK	N.L.
N.I.	Power Pack, Forward (48RE) (High Performance) .....	1	03-Up	A22108HPK	N.L.
<b>STEEL PLATES</b>					
120G	Overdrive Brake (.068") .....	3-6	90-Up	12120	4461047
120G	Overdrive Brake (.068") (Kolene) .....	3-6	90-Up	12120K	4461047
122G	Overdrive Direct (.054") .....	5-9	90-Up	12122A	4864053
122G	Overdrive Direct (.054") (Kolene) .....	5-9	90-Up	12122AK	4864053
122G	Overdrive Direct (.069") .....	5-7	90-Up	12122	4461054
126E	Direct (.070") .....	3	90-Up	22126	52118812AA
126E	Direct (.070") (Kolene) .....	3	90-Up	22126K	28701K
126E	Direct (.085") (Oversized) .....	AR	90-Up	22126X	2124826AB
126E	Direct (.085") (Oversized) (Kolene) .....	AR	90-Up	22126XK	2124826AB
128B	Forward (.070") .....	4	90-Up	22126	52118812AA
128B	Forward (.070") (Kolene) .....	4	90-Up	22126K	28701K
128B	Forward (.085") (Oversized) .....	AR	90-Up	22126X	2124826AB
128B	Forward (.085") (Oversized) (Kolene) .....	AR	90-Up	22126XK	2124826AB
139	Steel Module, A518 .....	1	90-97	22139E	N.L.
139	Steel Module, A518 .....	1	98-Up	22139G	N.L.
139	Steel Module, A618 .....	1	90-97	22139EA	N.L.
139	Steel Module, A618 .....	1	98-Up	22139GA	N.L.
139	Steel Module, 48RE .....	1	03-Up	22139H	N.L.
<b>PRESSURE PLATES</b>					
140G	Overdrive Brake (Front) .....	1	90-Up	12140	4461048
141G	Overdrive Brake (Rear) .215" .....	1	90-Up	12141	4461033
142G	Overdrive Direct (.085" Stepped to .215") .....	1	90-Up	22142	4461183
142G	Overdrive Direct (Front) .....	1	90-Up	12142	4461031
143G	Overdrive Direct (Rear) .....	1	90-Up	12143	4461030
146E	Direct (Top) .....	1	90-Up	22146	4617567
146E	Forward (Top) .....	1	90-Up	22146	4617567
149B	Forward (Bottom) (Beveled) .....	1	90-Up	22149	2466803
<b>VALVE BODY RECALIBRATION KITS</b>					
165	Shift Kit® (Diesel) (OD exc 48RE) (Transgo®) .....	1	90-03	T22165B	SK® TFOD-D
165	Shift Kit® (Diesel) (48RE) (incl 2003 w/ V10) (Transgo®) .....	1	03-10	T22165C	SK® 48RE
165	Shift Kit®, Jr. (Gas) (Transgo®) .....	1	90-02	T22167	SK® TFOD-JR
165	Shift Correction Kit, A518, A618 (Gas & Diesel) (Superior) .....	1	90-98	S22167	K500-618
165	Shift Correction Kit, A518, A618 (Gas & Diesel) (Superior) .....	1	99-04	S22167A	K500-618-L
165	Valve Body Kit (48RE) w/ the Electronic Throttle Valve Actuator (Superior) .....	1	03-Up	S22167C	K48RE
165	Reprogramming Kit™, A518, A618, HD & Hi-Perf (Transgo®) .....	1	90-02	T22169B	TFOD-HD2
165	Reprogramming Kit™, A518, A618, Full Manual Control-Race (Transgo®) .....	1	90-02	T22173B	TFOD-3
165	Sure Cure Kit, A518, A618, 48RE (Sonnax) .....	1	90-Up	S22174	SC-46/47RHE
165	Sure Cure Kit, 48RE Sonnax (T-22771-TL, -TL12, -TL13, T-F-22771A-TL17 Req) .....	1	03-Up	S22174A	SC-48RE
<b>SEALING RINGS</b>					
175D	Ring Kit (A518, A618) .....	1	90-Up	22175E	N.L.
175D	Ring Kit (48RE) .....	1	03-Up	22175H	N.L.
175D	Ring Kit, 1-2 Accumulator (Viton D-Rings) .....	1	90-Up	12191K	N.L.
177E	Input Shaft 1.175" OD (Metal) .....	2	90-93	22177A	2801054
177E	Input Shaft 1.245" OD (Metal) .....	2	94-Up	22177E	4741836
177E	Input Shaft 1.245" OD (Plastic w/ Step Joint) .....	2	94-Up	22177H	N.L.
178A	Stator Shaft (Front) (48RE) .....	1	03-Up	22178	N.L.
179A	Stator Shaft (Rear) (Teflon) .....	2	90-Up	22179T	3515321
179A	Stator Shaft (Rear) (Seal Plated) (Replaces 22179A) .....	2	90-Up	22179B	3743689
181E	Forward Drum 1.875" OD (Metal) .....	1	90-Up	22181	4058443
189I	Governor Support (A518) .....	2-3	90-Up	12189B	4461011
191D	3-4 Accumulator Piston (Small, In Valve Body) (Teflon) .....	1	90-Up	12191CT	4431959
192D	3-4 Accumulator Piston (Large, In Valve Body) (Teflon) .....	1	90-Up	12192CT	4431958
192D	Accumulator Piston (Large) 2.000" OD (Metal) .....	1	90-Up	12192	2124255
194D	Kickdown Servo Piston (Small) 1.500" OD (Metal) .....	1	90-Up	22194	0555-141022

## A518, A618, 46RE/RH, 47RE/RH, 48RE

ILL.		QTY.	YEAR	PART No.	REF. No.
<b>SEALING RINGS (Cont.)</b>					
195D	Kickdown Servo Piston & Cover (Large) 2.125" OD (Metal).....	2	90-Up	22195	1942123
194D	Kickdown Servo Piston (Small) 1.500" OD (Metal).....	1	90-Up	22194	0555-141022
195D	Kickdown Servo Piston & Cover (Large) 2.125" OD (Metal).....	2	90-Up	22195	1942123
<b>THRUST WASHERS</b>					
200	Washer Kit (A518 exc 48RE).....	1	90-Up	22200E	N.L.
200	Washer Kit (48RE).....	1	03-Up	22200F	N.L.
N.I.	Shim Kit, End Play (Includes 3 Each of .015" & .025" Shims).....	1	90-Up	22232K	N.L.
211A	Between Stator & Direct Drum (.043").....	1	90-Up	22211	2204621
211A	Between Stator & Direct Drum (.061").....	1	90-Up	22211A	2204622
211A	Between Stator & Direct Drum (.084").....	1	90-Up	22211B	2204623
211A	Between Stator & Direct Drum (.102").....	1	90-Up	22211C	2400284
213G	Overdrive Piston to Hub (.110").....	1	90-Up	12213	4431730
213G	Overdrive Piston to Hub (.124").....	1	90-Up	12213A	4431585
213G	Overdrive Piston to Hub (.138").....	1	90-Up	12213B	4431731
213G	Overdrive Piston to Hub (.155").....	1	90-Up	12213C	4431586
213G	Overdrive Piston to Hub (.169").....	1	90-Up	12213D	4431732
213G	Overdrive Piston to Hub (.184").....	1	90-Up	12213E	4431587
213G	Overdrive Piston to Hub (.198").....	1	90-Up	12213F	4431733
213G	Overdrive Piston to Hub (.213").....	1	90-Up	12213G	4431588
213G	Overdrive Piston to Hub (.228").....	1	90-Up	12213H	4431734
213G	Overdrive Piston to Hub (.243").....	1	90-Up	12213J	4431590
233B	Output Shaft 3 Tab .052" (Gray).....	1	90-Up	12233D	4505185
233B	Output Shaft 3 Tab .068" (Red).....	1	90-Up	12233DA	4505186
233B	Output Shaft 3 Tab .083" (Green).....	1	90-Up	12233DB	4505187
238BF	3 Gear Planet (3 Tab).....	2-4	90-Up	22238	1942081
238BF	4 Gear Planet (4 Tab) (2.25" ID).....	2-4	94-Up	22238B	4617888
238BF	4 Gear Planet (4 Tab) (2.50" ID).....	2-4	90-Up	22238A	2801060
238BF	5 Gear Planet (5 Tab).....	2-4	90-Up	22238D	4539129
238B	6 Gear Planet (6 Tab) (Front) (48RE).....	1-2	03-Up	22238F	52854039AA
238F	6 Gear Planet (6 Tab) (Rear) (48RE).....	1-2	03-Up	22238G	52854076AA
238F	6 Gear Planet (6 Tab) (Rear) (48RE) (Teflon Coated).....	1-2	03-Up	S22238GT	22700GT-01
238F	Shell to Rear Planet (6 Tab).....	1	96-03	22238E	4618000
254F	Under Snap Ring to Rear Band Drum (2 Tab).....	1	90-Up	22254A	52118059
<b>BEARINGS &amp; RACES</b>					
201	Bearing Kit (All).....	1	90-Up	22201A	N.L.
214G	Bearing, Overdrive Piston to Hub.....	1	90-Up	12214	4446724
220H	Bearing & Race, Overdrive Planet to Hub (Update).....	1	90-Up	12220	4740774
221H	Bearing, Overdrive Planet to Hub (3.853" OD) (Use 12220).....	1	90-Up	12221A	4461126
222H	Bearing, Overdrive Inner Sprag Race to Output Shaft (3.210" OD).....	1	90-Up	12222	4461014
232B	Race, Output Shaft.....	1	90-Up	12232A	4505188
257	Bearing, Case Repair (Sonnax).....	1	90-Up	S22257	22556-BRG
271I	Bearing, Output Shaft (Front) (2.750" ID).....	1	90-Up	12271	4461008
272I	Bearing, Output Shaft (Rear) (1.375" ID).....	1	90-Up	22272A	2466224
272I	Bearing, Output Shaft (w/ Bolt-On Yoke).....	1	90-Up	22272B	1672194
<b>SHIMS</b>					
N.I.	Shim Kit, Overdrive Set Up.....	1	90-Up	12213K	12783-01K
N.I.	Shim Kit, End Play (Includes 3 Each of .015" & .025" Shims).....	1	90-Up	22232K	N.L.
215G	Spacer, Intermediate Shaft to Overdrive Planet (.158").....	1	90-Up	12215	4431916
215G	Spacer, Intermediate Shaft to Overdrive Planet (.175").....	1	90-Up	12215A	4431917
215G	Spacer, Intermediate Shaft to Overdrive Planet (.193").....	1	90-Up	12215B	4431918
215G	Spacer, Intermediate Shaft to Overdrive Planet (.211").....	1	90-Up	12215C	4431919
232B	Race, Output Shaft to Forward Drum.....	1	90-Up	12232A	4505188
239	Shim, Under Washer #238 to Reduce End Play (10 Per Kit).....	1	90-Up	22239A	22700-Z
<b>GASKETS &amp; O-RINGS</b>					
300D	Gasket, Pan (Cork).....	1	90-Up	22300	2464324
300D	Gasket, Pan (Fiber).....	1	90-Up	22300F	2464324
300D	Gasket, Pan (Bonded).....	1	02-Up	22300W	2464324AC
305J	Gasket, Extension Housing to Case (A518).....	1	90-Up	12305AF	4531192
305J	Gasket, Overdrive Piston Retainer to Case.....	1	90-Up	12305D	4531191
305J	Gasket, Output Shaft Bearing Cover.....	1	90-Up	12305J	2801398
309A	Gasket, Pump Bolt Washers.....	6	90-Up	44309	MD707653
310A	Gasket, Pump.....	1	90-Up	22310	4028377
311A	O-Ring, Front Pump.....	1	90-Up	22311	1942021

## A518, A618, 46RE/RH, 47RE/RH, 48RE

ILL.		QTY.	YEAR	PART No.	REF. No.
<b>GASKETS &amp; O-RINGS (Cont.)</b>					
320	Gasket Kit, Valve Body (Aftermarket Upgrade) (Exc 48RE) .....	1	90-Up	12320AK	N.L.
328D	Gasket, Solenoid .....	1	90-Up	12328A	52118652
328D	Gasket, Governor Solenoid Body .....	1	90-Up	12328B	N.L.
347D	O-Ring, Electric Connector (15/16" Connector) .....	2	90-Up	12347	N.L.
349C	Seal, Throttle Lever Shaft .....	1	90-Up	12349	2466548
363D	Lip Seal, Reverse Servo Piston (2.812" OD) .....	1	90-Up	22363A	4058741
368J	O-Ring, Speed-O Housing (Red) .....	1	90-Up	12368	6031370
371C	Boot, Filler Tube .....	1	97-Up	12371	52118629AB
384D	O-Ring, Reverse Band Lever Shaft .....	1	90-Up	44380	1672358
<b>TECHNICAL MANUALS</b>					
400D	Tech Manual, A518, 618 .....	1	90-Up	12400E	83-500TM
400D	Tech Manual, 46RE, 47RE, 48RE .....	1	96-Up	22400E	46/47/48RE
<b>ELECTRICAL COMPONENTS</b>					
410C	Neutral Safety Switch (3 Prong Short) .....	1	90-97	12410A	4057750
410C	Neutral Safety Switch (3 Prong Long) .....	1	98-03	12410C	56028181AB
410C	Neutral Safety Switch (5 Prong Push-in) .....	1	01-Up	12410D	56045489AB
410C	Neutral Safety Switch MLPS Adapter (Late to Early Case) .....	1	90-Up	S22761S-2K	22179-06K
415	Sensor, Governor Pressure (4 Pin) (Transducer) (Round Connector) .....	1	96-00	12415B	56027720
415	Sensor, Governor Pressure (4 Pin) (Transducer) (Rectangular Connector) .....	1	00-Up	12415C	56028196AD
420D	Solenoid, Overdrive (Single) (No TCC) .....	1	90-95	22420	4531253
420D	Solenoid Kit (Dual) Includes 12420B & 12415B (Some 2000) .....	1	96-99	12420BK	96014593
420D	Solenoid, OD/TCC (Dual) (3 Pin Case Connector) .....	1	90-95	12420	4431954
420D	Solenoid, OD/TCC (Dual) (8 Pin Round & 4 Pin Oval Connector) .....	1	96-99	12420B	52118500
420D	Solenoid, OD/TCC (Dual) (8 Pin Round & 4 Pin Rect Connector) .....	1	00-Up	12420C	52118500AB
432	Solenoid, Governor Pressure .....	1	96-Up	12432A	4617210
432	Solenoid, Governor Pressure (Upgrade) .....	1	96-Up	12432H	N.L.
432	Repair Kit, Governor Solenoid w/ Tool Kits (Transgo®) Will Repair 6 Units .....	1	95-05	T12432RK	N.L.
436	Sensor, Output Speed (VSS) (A518ES, 46RE, 47RE, 48RE) (Elect. Governor) .....	1	90-Up	92436	4800879
445	Electronic Throttle Valve Actuator (Dodge 48RE 5.9L) .....	1	05-Up	22440	53041140-AB
445	Repair Kit, Harness (Solenoid) .....	1	94-04	12445BK	N.L.
445	Repair Kit, Harness (Neutral Safety Switch) .....	1	90-04	12445CK	4209695
448	Noise Suppressor, TPS Signal (46RE, 47RE Diesels) .....	1	96-02	22448	N.L.
<b>PUMPS</b>					
500A	Pump, Non Lock-Up (1.125" ID Rear Stator Bushing) .....	1	90-93	22500B	4728912
500A	Pump, Non Lock-Up (1.250" ID Rear Stator Bushing) .....	1	94-02	22500BA	4796469AD
500A	Pump, Lock-Up (3 Check Balls) (14T/15T) .....	1	90-93	22500C	472862AB
500A	Pump, Lock-Up (3 Check Balls) (11T/12T) .....	1	94-02	22500CA	4796467AC
500A	Pump, Lock-Up (48RE) .....	1	03-Up	22500G	5086715AB
510A	Pump Body & Gears (w/ 15T Outer Gear) .....	1	90-Up	22510A	N.L.
510A	Pump Body & Gears (w/ 11T Outer Gear) .....	1	94-Up	22510C	N.L.
520A	Stator, Non Lock-Up (2 Check Balls) (1.125" ID Rear Stator Bushing) .....	1	90-93	22520B	4058929
520A	Stator, Lock-Up (3 Check Balls) (1.125" ID Rear Stator Bushing) .....	1	90-93	22520C	4028273
520A	Stator, Lock-Up (3 Check Balls) (1.250" ID Rear Stator Bushing) .....	1	94-02	22520CA	4796467
530A	Pump Gears (14T/15T) .....	1	90-Up	22530	N.L.
530A	Pump Gears (11T/12T) .....	1	90-Up	22530C	N.L.
530A	Pump Gears (11T/12T) (Oversized) .....	1	90-Up	22530CA	N.L.
530A	Pump Gears (10T/11T) .....	1	94-Up	22530D	N.L.
530A	Pump Gears (10T/11T) (Oversized) .....	1	94-Up	22530DA	N.L.
<b>DRUMS &amp; CLUTCH HUBS</b>					
551H	Overdrive (6 Clutch) .....	1	90-Up	12551A	4401040
551H	Overdrive (8 Clutch) .....	1	90-Up	22551B	4461089
554B	Forward (Rear Clutch Retainer) .....	1	90-Up	22554	N.L.
554B	Forward (48RE, Retros A518, A618) .....	1	03-Up	22554G	52854149A
555A	Direct (Front Clutch) 3 Clutch .....	1	90-Up	22555A	4058437
555A	Direct (Front Clutch) 4 Clutch .....	1	90-Up	22555B	4058648
556F	Reverse (Slide on Race, 12 Roller) (Washer Under Snap Ring) .....	1	90-91	22556A	4505095
556F	Reverse, 14 Roller (Press on Race) (6.250" OD w/o Lip) .....	1	90-Up	22556AB	4531242
556F	Reverse, 14 Roller (Press on Race) (6.250" OD w/ Lip) .....	1	90-Up	22556AC	52118057
565E	Piston Kit, Direct (4 Clutch) .....	1	90-Up	22565	N.L.
565E	Piston Kit (48RE) .....	1	03-Up	22565A	N.L.
570G	Clutch Hub, Overdrive Clutch .....	1	90-Up	12570	4461072
575E	Clutch Hub w/ Input (Non Lock-Up) .....	1	94-02	22575BBK	N.L.
575E	Clutch Hub w/ Input (Lock-Up) (48RE) (Retros 71-Up if used w/ 22555C) .....	1	94-Up	22575CK	N.L.



# CHRYSLER

## A518, A618, 46RE/RH, 47RE/RH, 48RE

ILL.		QTY.	YEAR	PART No.	REF. No.
<b>PLANETS</b>					
580H	Overdrive, 4 Gear (22 Degree Angled Teeth) .....	1	90-93	12580A	4874392
580H	Overdrive, 4 Gear (15 Degree Angled Teeth) .....	1	94-Up	12580AB	4798520
580H	Overdrive, 5 Gear (22 Degree Angled Teeth) .....	1	90-Up	12580B	4461189
580H	Overdrive, 5 Gear (15 Degree Angled Teeth) .....	1	90-Up	12580BB	4761011
580H	Overdrive, 6 Gear (15 Degree Angled Teeth) .....	1	90-Up	12580BC	5015107AA
580H	Overdrive Planet Kit, 5 Gear (Retros All Angled Teeth) .....	1	90-Up	12580BBK-1	4874396
580H	Overdrive Planet Kit, 6 Gear (Retros All Angled Teeth) .....	1	90-Up	12580BCK	N.L.
583	Geartrain, Front & Rear Planet Kit (A518) .....	1	90-03	22583C	N.L.
583	Geartrain, Front & Rear Planet Kit (48RE).....	1	03-Up	22583G	N.L.
582B	Front (3 Gear) .....	1	90-93	22582A	4028110
582B	Front (4 Gear) (A518 use w/ 22674 shaft) .....	1	90-93	22582C	4028120
582B	Front (4 Gear) (A518 use w/ 22674A shaft).....	1	94-Up	22582CA	N.L.
582B	Front (5 Gear) (use w/ 22674A shaft) .....	1	94-Up	22582E	4617998
582B	Front (6 Gear) (48RE) (use w/ Updated Ring Gear 22592A).....	1	03-Up	22582G	52854137AA
584F	Rear (3 Gear).....	1	90-Up	22584	2466539
584F	Rear (4 Gear).....	1	90-Up	22584A	2801061
584F	Rear (6 Gear) (Aluminum) (Retros 3 & 4 Gear) .....	1	90-03	22584AA	52854140AA
584F	Rear, 6 Gear (Steel) (48RE) .....	1	03-Up	22584B	52854140AA
590H	Ring Gear, Overdrive Planet (15 Degree Angled Teeth) .....	1	94-Up	12590AB	4761010
590H	Ring Gear, Overdrive Planet (15 Degree Angled Teeth) (48RE).....	1	03-Up	22590C	5093157AA
592F	Ring Gear, Front Planet (58T).....	1	90-02	22592	2892656
592F	Ring Gear, Front Planet (48RE).....	1	03-Up	22592A	52854043AA
594F	Ring Gear, Rear Planet.....	1	90-02	22594	2538185
594F	Ring Gear, Rear Planet (48RE) .....	1	03-Up	22594A	52854074AA
<b>SUN GEARS, SHELLS &amp; SUPPORTS</b>					
610H	Sun Gear, Overdrive (22 Degree Angled Teeth) .....	1	90-93	12610A	4773810
610H	Sun Gear, Overdrive (15 Degree Angled Teeth) .....	1	94-Up	12610AB	5015107AA
612F	Sun Gear, Front & Rear Planet .....	1	90-02	22612	2801311
612F	Sun Gear, Front & Rear Planet .....	1	03-Up	22612B	N.L.
622F	Shell, Driving (Uses 6 Tab Washer) .....	1	90-02	22622A	N.L.
622F	Shell, Driving (48RE) .....	1	03-Up	22622B	52854056AA
622F	Sun Gear & Shell (Uses 3 Tab Washer).....	1	90-Up	22622K	N.L.
622F	Sun Gear & Shell (Uses 6 Tab Washer).....	1	94-Up	22622AK	N.L.
622F	Sun Gear & Shell (Uses 6 Tab Washer) (48RE) .....	1	04-Up	22622BK	N.L.
634C	Support, OD Piston Housing (w/ or w/o Governor Feed Holes).....	1	90-Up	A22634B	52118180
634C	Support, OD Piston Housing (w/ or w/o Governor Feed Holes) (Oversized).....	1	90-Up	A22634D	22754N-02K
634C	Support, OD Piston Housing (2 Slot w/ Gov Feed Holes) (A518).....	1	90-96	D22634B	52118180
634C	Support, OD Piston Housing (2 Slot w/o Gov Feed Holes) (46RE, 47RE) .....	1	97-Up	22634C	52117975
<b>ONE WAY CLUTCHES</b>					
650I	Roller Clutch, Overrun Clutch (Overdrive) .....	1	90-Up	12650	4461015
654C	Roller Clutch, Rear Spring & Roller Kits (14 Roller).....	1	90-Up	22654A	4617199
660H	Inner Race, Overdrive Roller Clutch .....	1	90-Up	12660	4461124
665C	Outer Race Kit, Bolt-In Cam (6 Bolt) (req T-518-ERT or T-518-PRT).....	1	L90-Up	22665AK	N.L.
<b>SHAFTS</b>					
670E	Input Shaft (23 Spline) (A518) .....	1	90-Up	22670BA	N.L.
670E	Input Shaft (23 Spline) (A618) .....	1	94-Up	22670BB	N.L.
670E	Input Shaft (23 Spline) (A518, A618) (Billet Steel) (Sonnax) .....	1	94-Up	A22670H	22121B-01
674C	Intermediate Shaft.....	1	90-93	22674	4471504
674C	Intermediate Shaft (47RE, 48RE) .....	1	94-Up	22674A	4617611
674C	Intermediate Shaft (HD) (47RE, 48RE) (Upgraded Steel, Heat Treated) .....	1	94-03	A22674HD	N.L.
674C	Intermediate Shaft Plug & Pilot Kit.....	1	90-Up	22674-1K	22171A-02K
678I	Output Shaft, 2wd (1 1/16" Long Key-Way Slot).....	1	90-Up	12678E	N.L.
678I	Output Shaft, 2wd (1 7/16" Long Key-Way Slot).....	1	90-Up	12678EA	N.L.
678I	Output Shaft, 2wd (16.250") (Electronic Speed Sensor) (No Keyway Slot) A618....	1	96-Up	22678BA	N.L.
678I	Output Shaft, 2wd (48RE).....	1	03-Up	22678L	N.L.
678I	Output Shaft, 4wd (5.250" Long) (w/ Pilot on Transfer Case End).....	1	90-Up	12678G	N.L.
678I	Output Shaft, 4wd (5.250" Long) (No Pilot on Transfer Case End).....	1	90-Up	12678GA	N.L.
678I	Output Shaft, 4wd (9.250" Long) (1 1/16" Long Key-Way Slot) .....	1	90-Up	12678F	N.L.
678I	Output Shaft, 4wd (9.250" Long) (1 7/16" Long Key-Way Slot) .....	1	90-Up	12678FA	N.L.
678I	Output Shaft, HD (4wd) (Hydraulic Exc 47RH).....	1	90-93	22678DHD	N.L.
678I	Output Shaft, HD (4wd) (Hydraulic 47RH).....	1	94-03	22678EHD	N.L.
678I	Output Shaft, HD (4wd) (RE Units).....	1	90-Up	22678FHD	N.L.
678I	Output Shaft, 4wd (48RE).....	1	03-Up	22678M	N.L.

## A518, A618, 46RE/RH, 47RE/RH, 48RE

ILL.		QTY.	YEAR	PART No.	REF. No.
<b>GOVERNORS</b>					
680I	Governor w/ Support (A518) (1 Steel Sleeve) .....	1	90-Up	12680CK	N.L.
680I	Governor w/ Support (A518) (2 Steel Sleeve) .....	1	90-Up	12680DK	N.L.
680I	Governor w/ Support (A518) (2 Alum. Sleeve).....	1	90-Up	12680BK	N.L.
680I	Governor, Gas.....	1	90-Up	12680B	N.L.
680I	Governor, Diesel (Large Valve 1.070" OD) Single Pin.....	1	90-Up	22680BA	N.L.
680	Governor w/ Support (A518).....	1	90-Up	22685BA	N.L.
681	Governor Valve, Steel (Replaces Aluminum Valve) .....	1	90-Up	22681	N.L.
681	Governor Valve (Aluminum).....	1	90-Up	S22681	N.L.
697I	Retainer, Governor Support.....	1	90-Up	12697	4461002
<b>VALVE BODIES</b>					
740D	Valve Body (Premium) (A518, 46RH, 47RH) (Non Lock-Up).....	1	90-Up	P22740-3	N.L.
740D	Valve Body (Premium) (A518, 46RH, 47RH) (Lock-Up) .....	1	90-99	P22740-5	N.L.
740D	Valve Body (Premium) (46RE, 47RE) (w/ Square Connector, Small Port) .....	1	95-99	P22740-6	N.L.
740D	Valve Body (Premium) (46RE, 47RE) (w/ Square Connector, Large Port).....	1	95-99	P22740-7	N.L.
740D	Valve Body (Premium) (46RE, 47RE) (w/ Rect. Connector, Small Port) .....	1	00-Up	P22740-1	N.L.
740D	Valve Body (Premium) (46RE, 47RE) (w/ Rect. Connector, Large Port) .....	1	00-Up	P22740-2	N.L.
740D	Valve Body (Premium) (48RE) (Rooster Comb Not Included).....	1	03-Up	P22740-12	N.L.
<b>VALVE BODY COMPONENTS</b>					
747	Plate, Universal VB to Case (Gas & Diesel) (48RE Only) .....	1	03-Up	22747D	TF-PLT-48RE
747	Plate, Universal VB to Case w/ Lock-Up Boost Tube (Gas & Diesel) (exc 48RE) ...	1	93-04	22747C	TF-PLT-95B
747	Plate, Universal VB to Case, w/o Lock-Up Boost Tube .....	1	90-97	22747CA	TF-PLT-94S
741D	Clip, TCC Boost Valve.....	1	90-Up	22741CEK	N.L.
741D	Detent Ball Bore Repair (Transgo®) (No Reamers Required).....	1	90-Up	T12749	TF-DETENT
741D	Spring Kit, 3-4 Accumulator .....	1	90-Up	12936K	N.L.
741D	Throttle Valve Kit (No Special Tools) (Transgo®) (Fixes 3 VB's).....	1	90-Up	T22741NBK	TF-TV
741D	Throttle Valve Kit (w/ Plunger) (No Stick Steel Replaces Alum) (Superior) .....	1	90-Up	A22741NBK	K074
<b>CASES &amp; HOUSINGS</b>					
760C	Case (14 Roller Sprag) (Gas) (.875" OD Case Connector) .....	1	90-Up	22760R	N.L.
760C	Case (14 Roller Sprag) (Gas) (1.125" OD Case Connector) .....	1	90-Up	22760RA	N.L.
760C	Case (14 Roller Sprag) (A518 Diesel) (2.479" OD Rear Servo) .....	1	90-Up	22760RB	N.L.
760C	Case (14 Roller Sprag) (A518 Diesel) (2.812" OD Rear Servo) .....	1	90-Up	22760S	N.L.
760C	Case (14 Roller Sprag) (A618 Diesel) (2.479" OD Rear Servo) .....	1	90-Up	22760SA	N.L.
760C	Case (48RE, A618, 47RE) (Diesel).....	1	01-Up	22760SB	N.L.
760C	Case (48RE) (w/ Throttle Actuator Motor Bosses).....	1	05-Up	22760SC	N.L.
765D	Pan (3.150" Deep) .....	1	90-Up	22765B	52118779AD
765D	Pan Kit (Deep Mag-Hytec) (Use w/ 12010C) (A518 90-95, 48RE 02-07).....	1	90-07	A22765C	N.L.
765D	Pan Kit (1.5 Extra Quarts) (Mag-Hytec) (Use 12010C) (A518 90-95, 48RE 02-07)	1	90-07	A22765CA	N.L.
770J	Extension Housing, 2wd (w/ Speed Sensor) (48RE) .....	1	04-Up	12770L	N.L.
770J	Extension Housing, 2wd (48RE).....	1	03-Up	22770G	N.L.
770J	Extension Housing, 4wd (15 7/8" Long, No Bosses) .....	1	97-Up	12770CA	N.L.
770J	Extension Housing, 4wd (11" Long, 2 Offset Bosses).....	1	97-Up	12770E	N.L.
770J	Extension Housing, 4wd (11" Long, 4 Even Bosses).....	1	97-Up	12770EA	N.L.
770J	Extension Housing, 4wd (16" Long).....	1	90-93	12770BB	N.L.
770J	Extension Housing, 4wd (48RE).....	1	03-Up	22770GA	5093166AA
843	Bracket, Solenoid Hold Down (use w/ 12415C, 12420C) .....	1	90-Up	12843A	52117937AB
846	Mount/Support, Transfer Case (4wd Diesel) (48RE) .....	1	03-Up	22846	N.L.
853B	Cushion Spacer, Rear Clutch Spring Spacer (Plastic).....	1	90-Up	22853	3515077
<b>SNAP RINGS</b>					
N.I.	Snap Ring Kit, Overdrive Section .....	1	90-Up	22860K	N.L.
860G	Overdrive Clutch (Rear .055" Waved).....	1	90-Up	12860	4461066
861G	Overdrive Clutch (Front) .....	1	90-Up	12861	4461082
862G	Overdrive Clutch (Rear .080" Flat).....	1	90-Up	12862	4461065
863H	Overdrive Direct Drum to Ring Gear.....	2	90-Up	12863	4461060
864G	Overdrive Direct Clutch (Front Waved).....	1	90-Up	12864	4461032
866G	Overdrive Sun Gear (Round).....	1	90-Up	12866	4461064
867H	Overdrive Sun Gear (Flat).....	1	90-Up	12867	6033480
868I	Overdrive Ring Gear to Output Shaft.....	1	90-Up	12868	4461059
878B	Forward & Direct Clutch (.062") .....	1	90-Up	22878	1942063
878B	Forward & Direct Clutch (.074") .....	1	90-Up	22878A	1942064
878B	Forward & Direct Clutch (.088") .....	1	90-Up	22878B	1942065
878B	Forward & Direct Clutch (.106") .....	1	90-Up	22878C	2766811
890F	Holds Reverse Drum to Output Shaft Support.....	1	90-Up	22890	6033591

## A518, A618, 46RE/RH, 47RE/RH, 48RE

ILL.		QTY.	YEAR	PART No.	REF. No.
<b>SNAP RINGS (Cont.)</b>					
894B	Holds Front Planet to Output Shaft.....	1	90-Up	22894	N.L.
8971	Holds Output Shaft Bearing to Extension Housing .....	1	90-Up	22897	N.L.
8971	Washer, Extension Housing Case Repair Where # 897 Snap Ring Rides .....	1	90-Up	A22897X	120361
<b>MISCELLANEOUS COMPONENTS</b>					
905D	Servo Assembly, Kickdown .....	1	90-Up	22905	N.L.
905D	Piston, Super Servo (Superior).....	1	90-Up	A22905H	K080
905D	Piston, Super Hold Servo (Sonnax).....	1	90-Up	S22905H	22301B-01K
905D	Piston, Sealing Ring Kit for Super Hold Servo (Sonnax).....	1	90-Up	S22905HRK	22301B-SK
905D	Piston Kit, HD 2nd & Accum (Billet Pistons, Quick Ratio Band Lever) .....	1	90-Up	A22905HDK	N.L.
909D	Cover, Front Servo w/ O-Ring.....	1	90-Up	22909C	22827-01
910D	Servo Assembly, Reverse Servo (2.479" OD) (A618).....	1	90-Up	22910A	N.L.
910D	Servo Assembly, Reverse Servo (2.812" OD).....	1	90-Up	22910	N.L.
912D	Piston, A518 Rear Servo (2.812" OD).....	1	90-Up	22912	2801281
912D	Piston, A618 Rear Servo (2.479" OD).....	1	90-Up	22912A	22912B
915	Strut, Band Anchor (Power Wedge).....	1	90-Up	22915-3	N.L.
916D	Strut, Front Band Assembly (Apply Side).....	1	90-Up	22916	N.L.
916D	Strut, Front Band (Apply Side) (Reinforced).....	1	90-Up	22916-2	22825-01
917D	Band Strut, Oversized (.100 Longer) (For Resurfaced Drums) .....	1	90-Up	22917B	22900-10
917D	Band Strut, Oversized (.150" Longer) (For Resurfaced Drums) .....	1	90-Up	22917BA	22900-15
925D	Accumulator Assembly (Plastic).....	1	90-Up	22925	N.L.
925D	Accumulator Assembly w/ Sleeve.....	1	90-Up	22925AK	22841-01K
926D	Spring, 1-2 Accumulator Return.....	1	90-Up	22926	3515079
927D	Piston, Accumulator (In Case).....	1	90-Up	22927	N.L.
936	Spring, 3-4 Accumulator .126" Wire Diameter (Inside Valve Body) .....	1	90-Up	22936	12861-01
741D	Spring, 3-4 Accumulator .063" Wire Diameter (Inside Valve Body) .....	1	90-Up	12936K	N.L.
960C	Piston, Overdrive Direct Clutch.....	1	90-Up	12960	4431695
970H	Spring, Overdrive Direct Apply.....	1	90-Up	A12970	4461027
974B	Spring, Forward Clutch Disc Spring (Only Fits 74-E00) (Narrow Notch) .....	1	90-E00	22974B	3743621
974B	Spring, Forward Clutch Disc Spring (Does Not Fit 74-E00) (Wide Notch).....	1	L00-Up	22974A	1942015
993	Insulator, Detent Lever (Screw In Neutral Switch).....	1	90-Up	22993C	22229-03
993	Insulator, Detent Lever (Push In Neutral Switch).....	1	01-Up	22993D	22229-07K
996C	Adapter Kit, Cooler Line w/ 1/4" Pipe Fitting (Fix Cracked Case) (Incl. Tap) .....	1	90-Up	S12996AK	22000-01K
996C	Adapter, Cooler Line w/ 1/4" Pipe Fitting (Fix Cracked Case) (w/o Tap).....	1	90-Up	S12996A	22000-01
996C	Cooler Line Fitting, 3/8" Tubing (Push In Type) .....	1	90-Up	22996A	52028629
996C	Cooler Line Fitting, 1/2" Tubing (Quick Connect Type).....	1	90-Up	22996B	4897792AA
996C	Cooler Line Fitting, 1/2" Tubing (Flare) .....	1	90-Up	22996C	52028764AA
996C	Cooler Line Fitting, 1/2" Tubing (Male Fitting) (48RE) .....	1	90-Up	22996Z	N.L.
<b>TOOLS</b>					
N.I.	Adapter, Transmission Band Adjuster Use with Torque Wrench.....	1	90-Up	T-1319	N.L.
N.I.	Alignment Shaft, Spline For Direct Clutch Spring Compressor .....	1	90-Up	T-1307	N.L.
N.I.	Bushing Driver Handle, Non Threaded Use with T-1320 .....	1	90-Up	T-3208	N.L.
N.I.	Disconnect Tool, Cooling Line 3/8" & 1/2" Liners (97-Up Chrysler) .....	1	97-Up	T-1321	N.L.
N.I.	Gauge, Piston Shim & Internal Shaft Spacer .....	1	90-Up	T-1301	N.L.
N.I.	Gauge Bar, Used To Select Proper Thrust Plate Use with a Dial Indicator.....	1	90-Up	T-3210	N.L.
N.I.	Guide Plate , Used For Drilling The Case To Install Outer Race Kit A22665AK .....	1	90-Up	T-518-ERT	N.L.
N.I.	Installer, Front Pump Seal Use with Driver Handle T-3208.....	1	90-Up	T-1320	N.L.
N.I.	Installer, Front Pump Seal .....	1	90-Up	T-3229	N.L.
N.I.	Installer, Overdrive Piston Seal Fits 4 Speed Rwd 96-Up.....	1	96-Up	T-1322	N.L.
N.I.	Installer, Rear Extension Housing Seal Use with Driver Handle T-3208.....	1	90-Up	T-1450	N.L.
N.I.	Installer & Remover, Front Clutch Assembly Retaining Clip .....	1	90-Up	T-1441	N.L.
N.I.	Pin Tool, Reverse Piston.....	1	90-Up	KT12913	N.L.
N.I.	Remover, Output Shaft Bushing .....	1	90-Up	T-1323	N.L.
N.I.	Spring Compressor, Direct Clutch .....	1	90-Up	T-1302	N.L.
N.I.	Spring Compressor, Direct Clutch Set Includes T-1307 and T-1302 .....	1	90-Up	T-1318	N.L.

## A518, A618, 46RE/RH, 47RE/RH, 48RE

ILL.		QTY.	YEAR	PART No.	REF. No.
VOL.	SONNAX PRODUCTS	PAGE	ILL.	PART NO.	SONNAX NO.
Vol 9	2nd Gear Super Hold Servo Kit (16% More Apply Area Than OEM) (All).....	N.I.	N.I.	S22905H	22301B-01K
Vol 9	3-4 Accumulator Spring (Matches OEM 47RE Diesel Calibration) (All).....	N.I.	N.I.	S22936	12861-01
Vol 9	4-Spool Switch Valve (All).....	N.I.	1	S22741A-1	22771A-01
Vol 9	4-Spool Switch Valve O.S. (All) (req T-22771A-TL13).....	N.I.	1	S22741AA-1	22771A-13
Vol 9	Accumulator Piston Kit, Dual Seal Billet (Anodized w/ Dual Rings) (All) .....	N.I.	N.I.	S22927	22841-04K
Vol 9	Band Strut O.S. (.100" Longer Than OEM) (All) .....	N.I.	N.I.	S22917B	22900-10
Vol 9	Band Strut O.S. (.150" Longer Than OEM) (All) .....	N.I.	N.I.	S22917BA	22900-15
Vol 9	Bearing & Plate (Overdrive Sun Gear To Planet) (46RE).....	N.I.	N.I.	S12220	12860-01K
Vol 9	Boost Valve Kit (TCC).....	N.I.	2	S22741C-1	22771-19K
Vol 9	Boost Valve Spring Retainer (5 per bag) (All).....	N.I.	9	S22741C-4	22990-01
Vol 9	Bushing, Overdrive Sprag Pilot O.S. (Requires Machining) (46RE, 47RE).....	N.I.	N.I.	S12509-01	12509-01
Vol 9	Bushing, Stator Support Shaft (Upgraded) (47RE, 48RE).....	N.I.	N.I.	S22037B	22005A-01K
Vol 9	Case Repair Bearing (Machining Required) (3 per bag) (All).....	N.I.	N.I.	S22257	22556-BRG
Vol 9	Cooler Line Repair Kit w/ Tap (Adapters w/ .250" Fittings) (5 Per Bag) (All) .....	N.I.	N.I.	S12996AK	22000-01K
Vol 9	Cooler Line Adapter (Refill for S12996AK) (qty 1) (All).....	N.I.	N.I.	S12996A	22000-01
Vol 9	Endplay Shim (For 3 or 4 Tanged OE) (.010" Thick) (10 Per Bag) (46RE, 47RE)...	N.I.	N.I.	S22239A	22700-Z
Vol 9	Front Servo Piston Cover Kit (Includes O-Ring) (All).....	N.I.	N.I.	A22909C	22827-01
Vol 9	Governor Bore Plug Kit (All).....	N.I.	8	S22741HK	22771-14K
Vol 9	Input Shaft & Hub Assembly, Heavy Duty (47RE, 48RE) .....	N.I.	N.I.	A22670H	22121B-01
Vol 9	Intermediate Accumulator Sleeve Kit (All).....	N.I.	N.I.	A22925AK	22841-01K
Vol 9	Intermediate Plug & Pilot Kit (5 per bag) (46RE, 47RE).....	N.I.	N.I.	S22674-1K	22171A-02K
Vol 9	Kickdown Band Strut HD (High Strength Steel) (All) .....	N.I.	N.I.	S22916-2	22825-01
Vol 9	Line Pressure Plug & Sleeve Kit (.200" Diameter Plug) (46RE, 47RE) .....	N.I.	7	S22741FK	22229-01K
Vol 9	Line Pressure Plug & Sleeve Kit (.264" Diameter Plug) (46RE, 47RE).....	N.I.	7	S22741FAK	22229-04K
Vol 9	Lube Regulated Pressure Regulator Valve (All) .....	N.I.	3a	S22741P	22771A-02K
Vol 9	Manual Valve (All).....	N.I.	6	S22741M	22771-09
Vol 9	Neutral Safety Back-Up Insulator Kit (Digital Range) (01-Up) (46RE, 47RE).....	N.I.	N.I.	A22993D	22229-07K
Vol 9	Neutral Safety Back-Up Insulator Kit (Up to 2002) (46RE, 47RE).....	N.I.	N.I.	A22993C	22229-03
Vol 9	NSS Adapter Kit (Adapts 01-Up Cases to Earlier Vehicles) (46RE, 47RE) .....	N.I.	N.I.	S22761S-2K	22179-06K
Vol 9	Overdrive Set-Up Shim Kit (All) .....	N.I.	N.I.	S12213K	12783-01K
Vol 9	Overdrive Sun Gear (15% Helical Cut) (1995-Up) (46RE) .....	N.I.	N.I.	S12655C-1	12655C-1
Vol 9	Piston Retainer Kit (Improved Oil Flow) (All) .....	N.I.	N.I.	S22634B	22754N-01K
Vol 9	Piston Retainer Kit O.S. (Improved Oil Flow) (Machining Required) (All).....	N.I.	N.I.	A22634D	22754N-02K
Vol 9	Pressure Reg Valve Kit O.S. (46RE, 47RE) (req T-F-22771A-TL7 & T-VB-FIX) .....	N.I.	3b	22741PAK	22771A-07K
Vol 9	Pressure Reg Valve Kit O.S. (48RE) (req T-F-22771A-TL7 & T-VB-FIX) .....	N.I.	3c	S22741P-FK	22771A-16K
Vol 9	Primary Governor Valve (1990-03) (46RH & 47RH Units Only) .....	N.I.	N.I.	S22681	12802-01
Vol 9	Rear Servo Piston (1994-96) (47RE).....	N.I.	N.I.	S22912A	22912B
Vol 9	Rear Servo Piston (1997-Up) (47RE, 48RE).....	N.I.	N.I.	S22912B	22912C
Vol 9	Rear Servo Piston (2.800" OD) (46RE) .....	N.I.	N.I.	S22912	22912
Vol 9	Reverse Servo Piston Plug Kit (All) .....	N.I.	N.I.	A12913	22912-01K
Vol 9	Shift Lever Case Bore Repair Sleeve (All) (req T-56361-TL).....	N.I.	N.I.	S22069	22179-02
Vol 9	Sure Cure Kit (Except 48RE).....	N.I.	N.I.	S22174	SC-46/47RHE
Vol 9	Sure Cure Kit, 48RE Sonnax (T-22771-TL, -TL12, -TL13, T-F-22771A-TL17 Req)	N.I.	N.I.	S22174A	SC-48RE
Vol 9	Throttle Valve Kit (All) .....	N.I.	4	S22741NDK	22771-03K
Vol 9	Throttle Valve Kit (Performance Version) (All) .....	N.I.	4	S22741NHP	22771-HDK3
Vol 9	Throttle Valve Kit O.S. (All) (req T-F-22771-TL & T-VB-FIX Required).....	N.I.	5	22741NCK	22771-04K
Vol 9	Valve Body Detent Ball & Sleeve Kit (All) (req T-22771-TL12).....	N.I.	10	S22741MD	22771-12K